

## list of products



### **LIGHT BEAM** spot

light source with control and power supply

- heat without contact between tool and workpiece
- exactly control of temperature
- 150/250/400/1000 W halogen infrared lamp
- integrated cooling
- microprocessor based control unit



### **LIGHT BEAM** tool

soldering system with light source, solder supply, control and power unit

- heat without contact between tool and workpiece
- precise solder supply
- integrated control of all soldering functions
- low operating costs
- easy maintenance
- easy integration in automated applications



### **LIGHT BEAM** economic

automatic soldering station

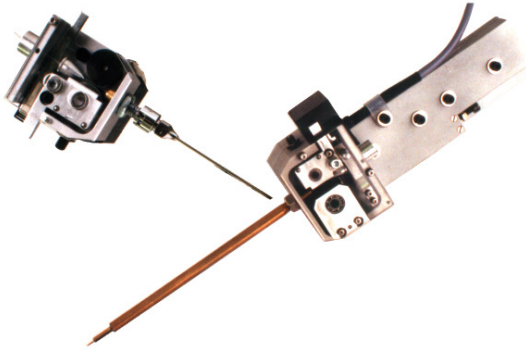
- 3 linear axis with step motors
- moving range (x,y,z) up to 395x300x140 mm
- PC-control and programming system WinControl
- soldering system LightBeam
- the soldering process takes care in a closed area



### **LIGHT BEAM** vario

inline soldering station

- 3 axis robot with PC-control
- moving range (x,y,z) 500x500x200 mm
- the soldering process takes care in a closed area
- easy adaptation by its modular concept
- soldering system LightBeam
- programming system WinControl



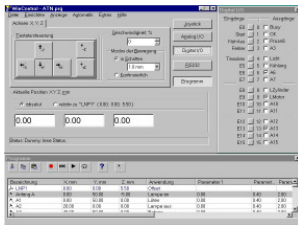
### solder wire feeder Mosquito A25/A50

- precise solder wire feed
- wire diameters from 0.5 to 1.5 mm
- high torque by 12V DC-motor with gearing
- electronically encoder for wire feed control
- optional time or mass control
- easy integration in automated applications



### positive displacement valve DSSV

- accurate and repeatable dispensing of solder paste
- luer lock -output (for standard needles), -input syringes
- easy integration in automated applications
- control unit with power source
- precise air pressure adjustment for reservoir



### WinControl software

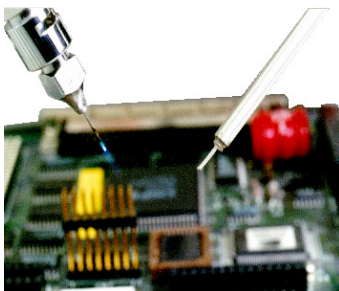
programming system for point focussed processes

- for MS-Windows 95/98/NT
- 3 axis with stepping motors
- digital and analogue inputs and outputs
- program editor
- free programmable processes



### temperature control TU-D76

- measurement of temperature by pyrometer
- diameter of measurement spot 2 mm
- monitoring the temperature course
- error signal by leaving process limits
- variable adjustment of the limits



### automated selective soldering applications

customer-specific with:

- microflame
- automated soldering iron or forming die
- laser soldering solutions
- induction loop

please send me more information to:  
my address:

Phone:  
Fax:  
email:

- |   |   |
|---|---|
| <input type="checkbox"/> LightBeam-spot     | <input type="checkbox"/> Solder Feeder Mosquito A25/A50 |
| <input type="checkbox"/> LightBeam-tool     | <input type="checkbox"/> Dispensing of solder paste     |
| <input type="checkbox"/> LightBeam-economic | <input type="checkbox"/> WinControl                     |
| <input type="checkbox"/> LightBeam-vario    | <input type="checkbox"/> Temperature Control TU-D78     |
|   | <input type="checkbox"/> Microflame                     |