

# PickToLight ReelStorage PTL-SR



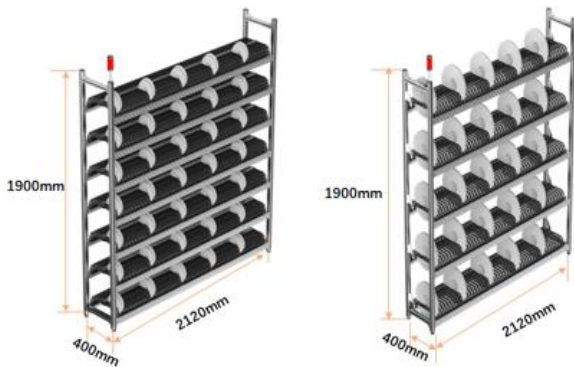
- Efficient, space-optimised material management
- Clear identification and avoidance from incorrect placement
- No waste of time for "searching material"
- Good price/performance ratio

## PickToLight PTL-SR

are intelligent material shelves. The single corresponding LED position light guides the operator to prepare the material quickly and accurately. The worker is relieved and unnecessary errors are avoided.

The system is based on a desktop workstation with PC  
 Actions on PC and with scanner (more handy than PDA/AMD)  
 On the table there is a holder to fix the scanner.

On the table and in the warehouse there are signs with scans for the basic functions



2 variants  
 PTL-SR-1400:  
 2 sides, 7 levels  
 for 1400= 2x7x100 178 mm- reels

PTL-SR-500  
 1 sides, 5 levels  
 for 500= 1x5x100 380 mm- reels

With the PTL roller carriers existing shelves can be converted into intelligent shelves



Codes for manual programming

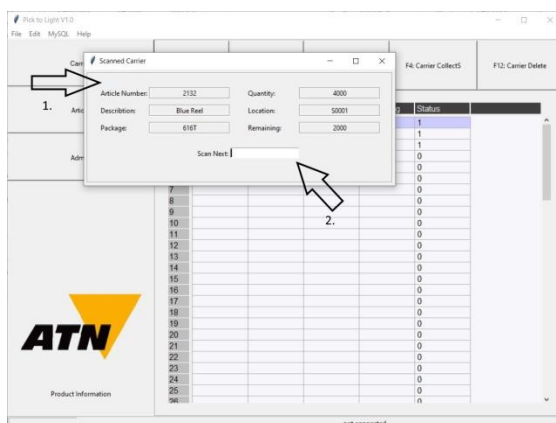


space-saving storage



Combination of single shelves

## Simple, intuitive software for material management



The basic functions (with scanner) are

- F1: CarrierInfo: Scan UID, all relevant data about this carrier are displayed on the PC
- F2: CarrierAdd: UID scan, lamp shows storage location
- F3: CarrierCollect: OK scan
- F4: CarrierCollectS: printed list with UIDs
- F5: ArticleCollect: UID scan, lamp shows storage location
- F12: CarrierDelete: remove and scan
- F13: CarrierDelete: Scan printed list of UIDs
- F14: CarrierDelete: Lamps shows storage locations
- F15: CarrierDelete: Remove carrier in any order and scan, are removed from the list, ok, if list is empty
- F16: CarrierDelete: Scan UID, Scan UID
- F17: CarrierDelete: Scan UID (an empty roll)
- F18: CarrierDelete: Warehouse shows space with carrier with same article

The integration of the PickToLight rack with the StorageGuide software is done via the SQL database. External programs can read the information without any problems. The data import takes place via

- - the UID Creator from the goods receipt
- - the SQL database or
- - csv files