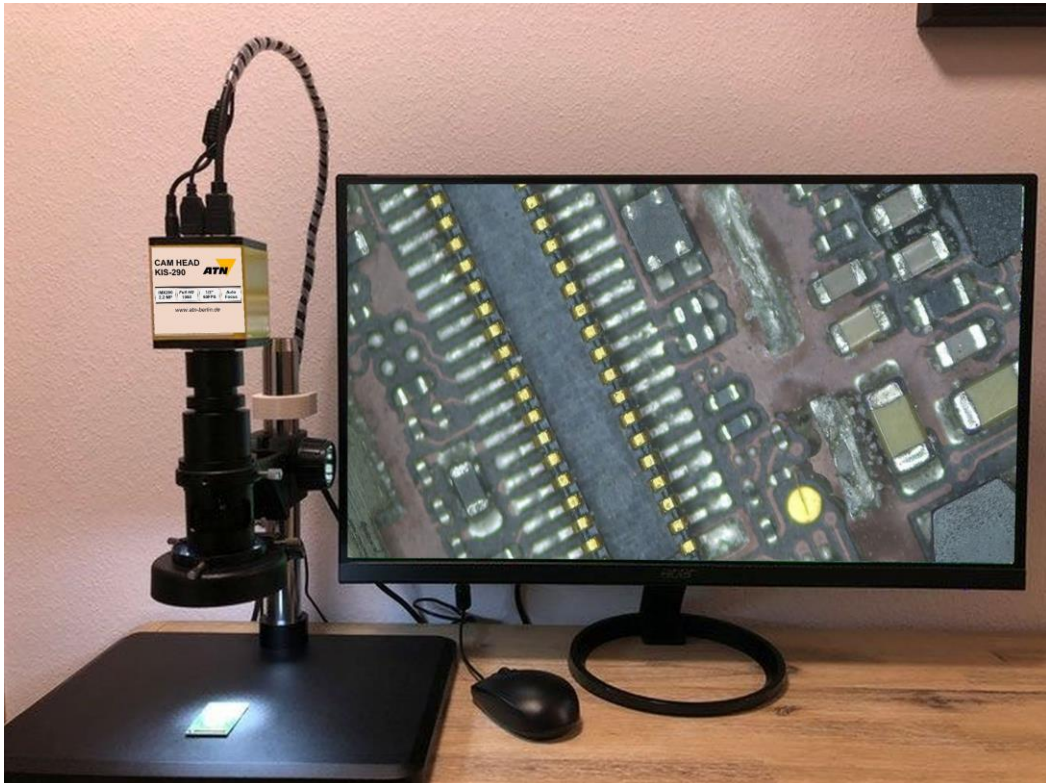


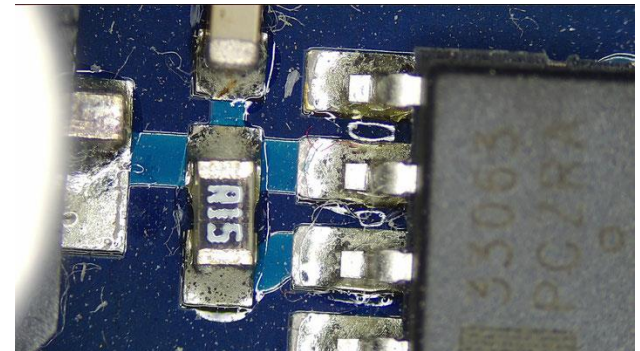
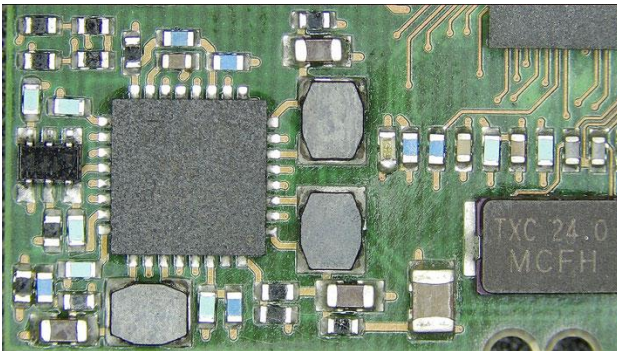
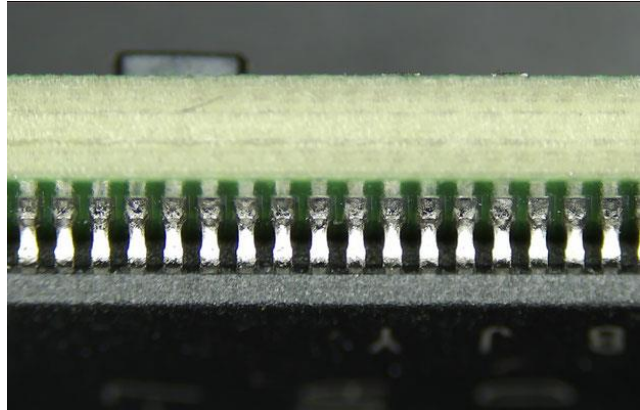
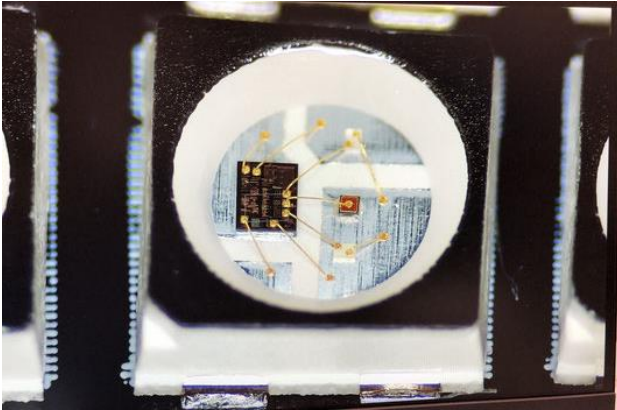
Inspection Camera KIS-IMX290



This microscope system offers brilliant image quality without delays at the HDMI output. It has a fast zoom and offers automatic image adjustment with a wide range. The depth of field is perfect thanks to the integrated HDR function. PCB repairs and SMT inspections have never been easier.

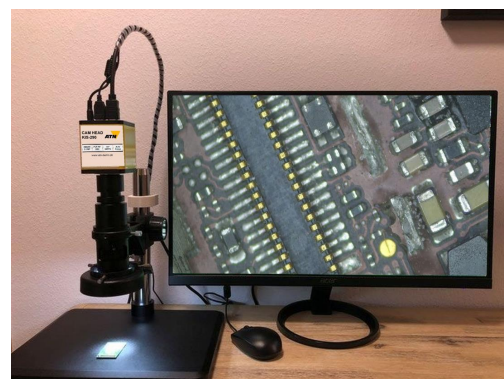
Inspections-Camera KIS-IMX290

The manual optical inspection is used especially for the inspection of small series and prototypes as well as in development. By means of a manual, optical inspection almost all defect images can be detected and documented. Advantages compared to automated systems are the mostly low investment costs and the flexibility. Extensive programming is not necessary.



Technical data

Camera	IMX290 Sony 2.2 MP automatic wide range sensor with BSI zoom and high light sensitivity
Lens	16X-160X adjustable magnification 25 mm Zoom C-Mount lens 0.7X ~ 5X Working distance 110 – 170 mm
Pixel	Size 1 / 2,8 "
Lens mount	C / CS-type
Display frame rate	60 Hz at 1080 P
Shutter Speed	1/50 s (1/60 s)
Exposure	Automatic and manual
Software functions	HDR mode, AWB / MWB, colour adjustment Save image to Micro-SD Save H264 video to Micro-SD Add lines horizontally and vertically Real time clock
Dimensions	300 x 300 x 250 mm
Weight	5 kg
Power supply	AC 230 V / 110 V



(Screen is not included in delivery)